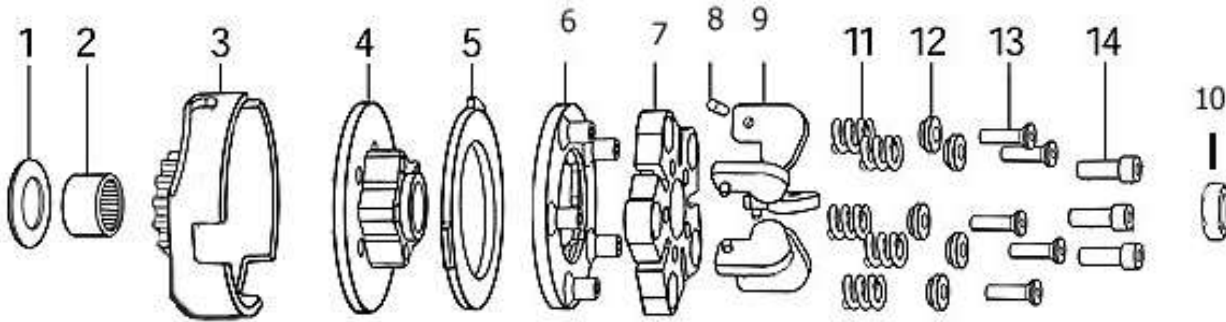


920260 Revinator Clutch Manual INTUITIVE RACE PRODUCTS KTM-50 2002-2008

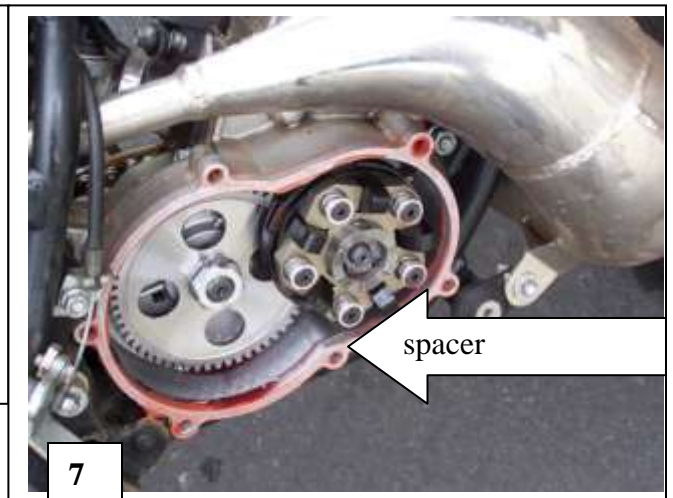
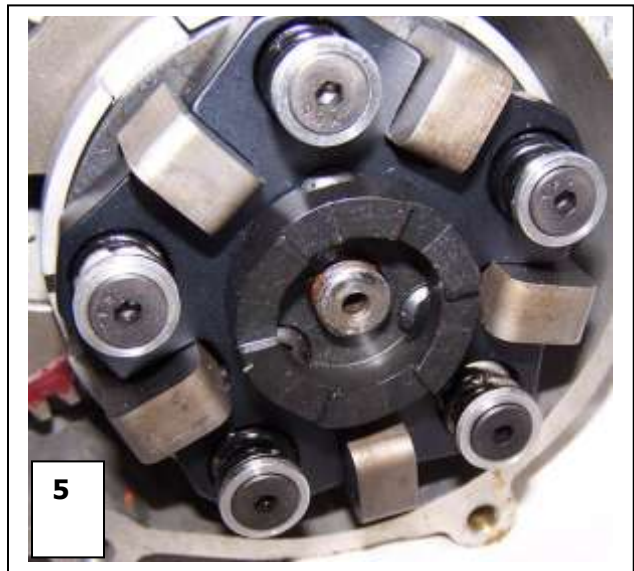
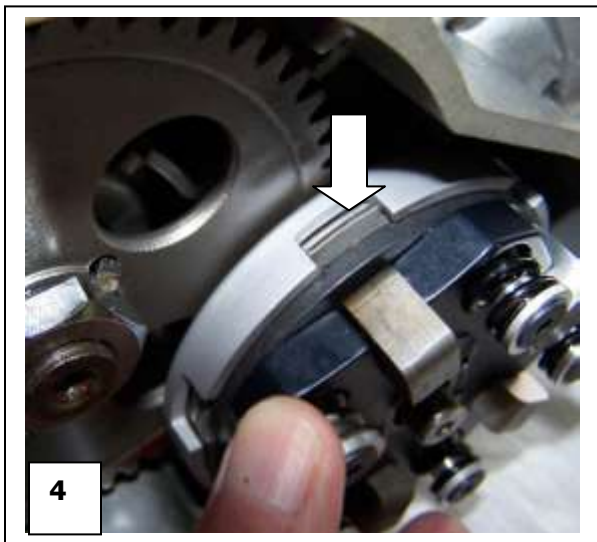
Installation

Parts interchangeable with Dominator Clutch

1. Install washer item #1 onto crankshaft View Pic 1
2. Slide factory KTM bearing item #2 onto crankshaft apply oil to bearing View Pic 2
3. Install basket item #3 View Pic 3
4. Install friction disc and drive assembly to crankshaft View Pic 4 You must be careful to align Tabs in disc with slots in basket See arrow in picture
5. Install kick dog and tighten KTM nut to factory spec item#10 View Pic 5
6. Remove alignment bushings View Pic 6
7. Install crankcase spacer with Permatex High Temp Red RTV Silicone Gasket Maker applied to both sides of spacer as well as engine case and clutch housing or use KTM gasket 45130025000 on each side of spacer Pic 7
8. Install crankcase cover and tighten bolts to factory spec
9. Add 250ML of IRP Nytro Lubricant. Semi synthetic ATF can also be used.
Do not use 75W gear oil as heavy oil causes excessive slip.



Item No	Part No	Description	Units Req
1	920262	Thrust Washer	1
2		Bearing KTM P/N 45132020030	1 (not included)
3	920263	Drum with Gear	1
4	920264	Drive hub	1
5	920227	Friction disc, cerametalic	1
	920383	Friction disc, carbon fiber	OPTIONAL
6	920265	Pressure Plate	1
7	920266	Lever Support	1
8	920267	Dowel Pin	5
9	920268	Lever	5
10	920269	Dog kick	1
11	920233	Spring .091" Standard	5
	920245	Spring .099" Hi Rev	OPTIONAL
12	920271	Retainer	5
13	920272	Screw, adjusting 10-32x5/8	5
14	920273	Screw, button head	3
	920261	Case Spacer , clutch side	1
Accessory	920240	Puller	OPTIONAL
Accessory	920238	Spanner Wrench	OPTIONAL
Accessory	920898	Nytro Clutch Oil	OPTIONAL



Intuitive Race Products
Vista California
WWW.INTURACE.COM

Stall Speed Adjustment

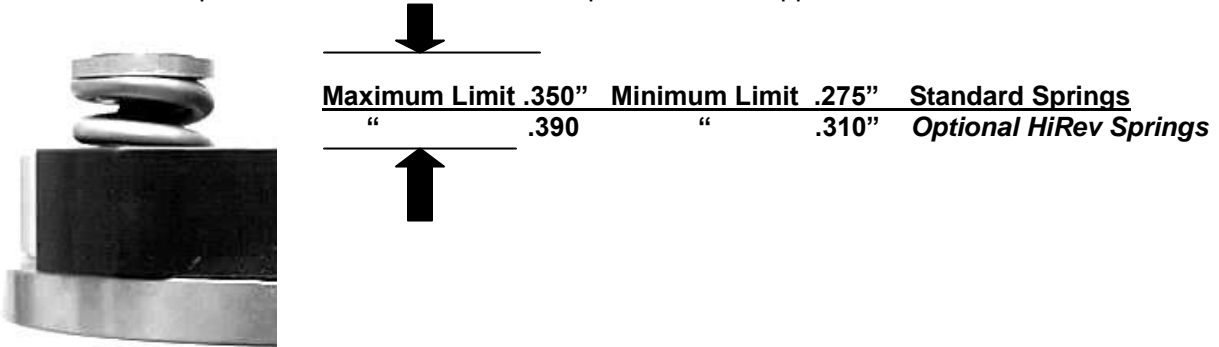
The clutch comes from the factory pre-adjusted for a stall speed of about 9,800 rpm. This is the best stall speed we have found for good performance with KTM. If you want to experiment with stall speed you can raise or lower stall speed of the clutch. A tachometer is mandatory to set stall speed.

For higher stall speed turn all 5 flat head screws clockwise 1/8 turn per test session.

For lower stall speed turn all 5 flat head screws counter-clockwise 1/8 turn per test session.

Do not exceed adjustment limits below. Standard Springs: Max .350" to Min .275" Note: HiRev Springs have different adjustment limits..Max .390" to Min .310" see picture below

Measure from top of the flat head screw to the top of the lever support as shown below.



Maintenance **Inspect clutch friction disc after every race event replace at .088" thick**

***FRICION DISC CAN BE REMOVED WITHOUT TAKING THE CLUTCH OFF THE CRANKSHAFT...
TO REMOVE THE FRICTION DISC REMOVE THE KICK DOG.. THEN REMOVE THE THREE BUTTON HEAD SCREWS.. LIFT
OFF THE LEVER SUPPORT TO GAIN ACCESS TO THE FRICTION DISC***



Remove button head screws.
Take Lever Assembly off.



Inspect friction disc and replace when worn below .088" Note: it is not necessary to remove drive hub when replacing friction disc.



A puller is needed when removing drive hub when replacing basket or bearing.