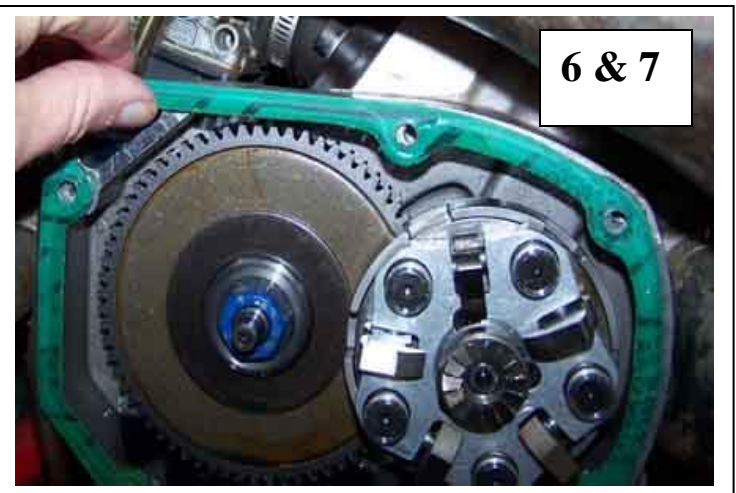
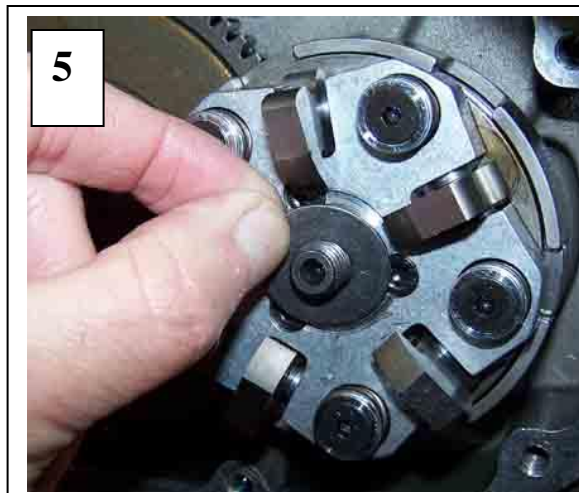
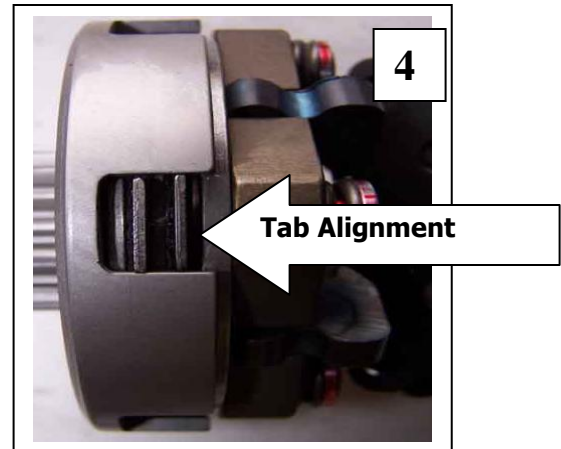
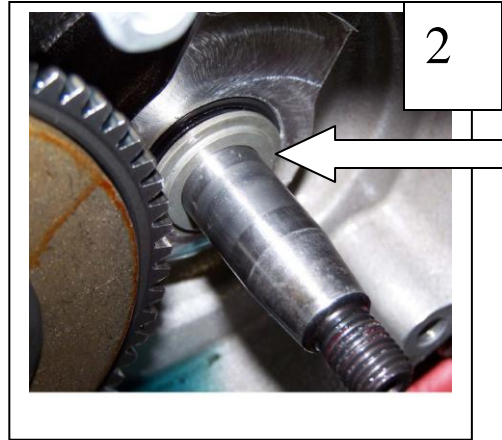
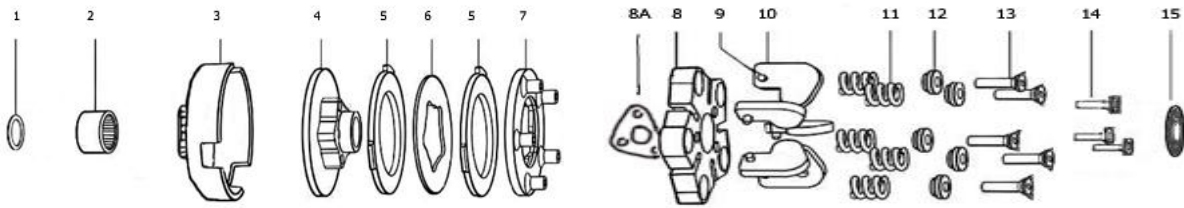


IRP Stryker Clutch Installation Cobra 50cc



1. Remove factory washer from crankshaft. See arrow
2. Install IRP step spacer (item #1) with small diameter facing away from engine.
3. Install basket
4. Install drive unit onto crank while making sure external tabs of friction discs align with slots in basket.
5. Install washer P/N 920237 (item #15)
6. Install factory kick dog, put a drop of blue loctite on crank threads, and tighten to 25 ft lbs
7. **WARNING!!!! 2 Cobra cover gaskets (.062" thick each) are required to prevent levers hitting kick starter gear in starter housing.**
8. Add 450cc oil



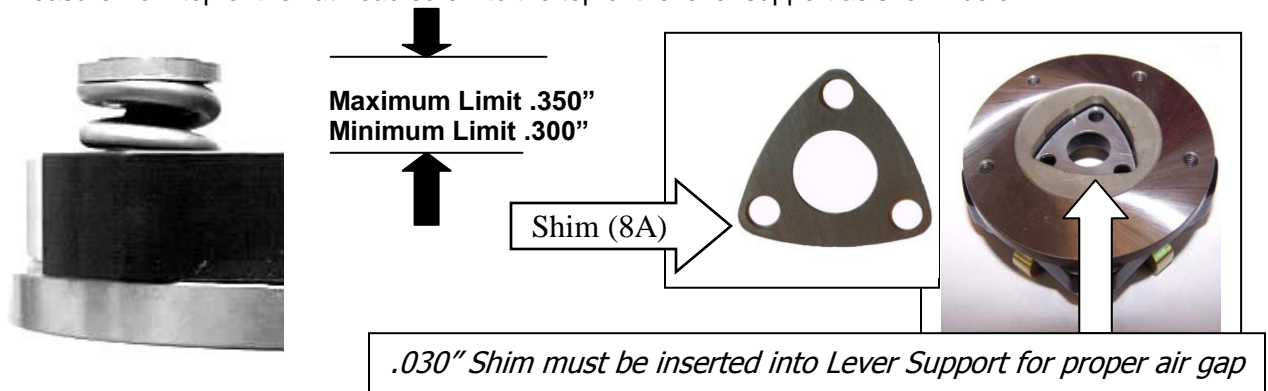
P/N 920220 IRP CLUTCH COMPLETE

Item #	Description	Part Number	Units Required
1	Step Spacer	920221	1
2	Bearing	920224	1
3	Basket with bearing	920222	1
4	Drive Hub	920226	1
5	Friction disc, each	920227	2
6	Floater disc .060" thick	920228A	1
7	Pressure Plate	920229	1
8	Lever Support	920230	1
8A	Shim .030"	920228B	1
9	Dowel Pin, each	920231	5
10	Lever, each	920232	5
11	Spring, each .099" wire dia GOLD COLOR	920245	5
12	Retainer, each	920234	5
13	Screw, flat head, each	920235	5
14	Screw, socket head, each	920236	3
15	Washer	920237	1
	Spanner wrench, optional	920238	
	Puller	920240	

Stall Speed Adjustment

The clutch comes from the factory pre-adjusted for a stall speed of about 9500 rpm. This is the stall speed we have found for good performance. If you want to experiment with stall speed you can raise or lower stall speed of the clutch. A tachometer is needed for accurate measurement of stall speed. For higher stall speed turn all 5 flat head screws (item 13) clockwise 1/4 turn per test session. For lower stall speed turn all 5 flat head screws counter-clockwise 1/4 turn per test session. Do not exceed adjustment limits below.

Measure from top of the flat head screw to the top of the lever support as shown below.



Maintenance

Check floater for wear or warp. If warped more than .005" replace
 Check friction discs for wear and replace when worn below .092"
 Check drum and gear for wear or cracks and replace if necessary.